

# Juvenile Detention

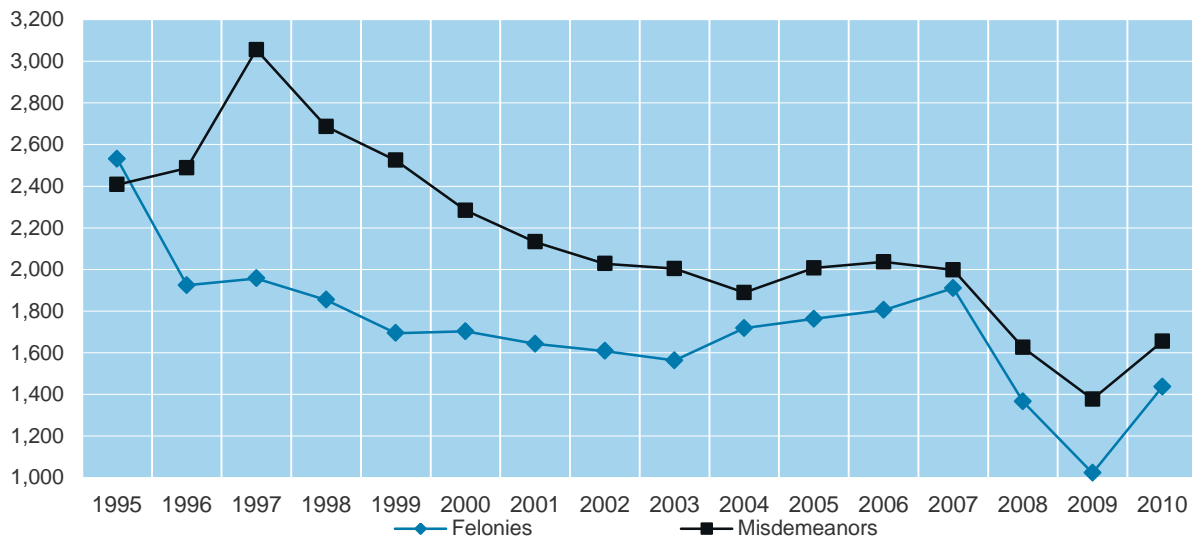
**Table 1. Admissions to the Franklin County Juvenile Detention Center by Type of Crime, 1995–2010**

Year	Felonies	Misdemeanors	Other	Total
1995	2,531	2,407	444	5,382
1996	1,924	2,487	315	4,726
1997	1,957	3,055	416	5,428
1998	1,854	2,686	308	4,848
1999	1,694	2,524	242	4,460
2000	1,703	2,284	166	4,153
2001	1,643	2,132	230	4,005
2002	1,608	2,028	166	3,802
2003	1,563	2,004	109	3,676
2004	1,718	1,889	109	3,663
2005	1,763	2,007	56	3,826
2006	1,805	2,036	48	3,889
2007	1,910	1,998	68	3,976
2008	1,365	1,625	68	3,058
2009	1,023	1,377	55	2,455
2010	1,436	1,654	48	3,138

<sup>(1)</sup> Prior to 2004 the Franklin County JDC counted only the most serious offense committed by each individual admitted. In 2004 JDC began counting all offenses so that those individuals with multiple offenses are counted more than once. The total reflects the number of individuals admitted, not total offenses.

- In 2010, total admissions to the Juvenile Detention Center (JDC) were similar to 2008 levels, representing both 28% increase from 2009’s atypical low and a 21% decrease from 2007.
- Teen Court, a diversion program for first-time misdemeanor offenders, received 1,308 referrals from 2007 to 2009, with 1,044 successful cases, 241 unsuccessful cases, 3 neutral cases, and 20 youth offenders still actively in the program. From a sample of 100 referrals in 2007, 23 have had new criminal charges, 8 have had new traffic charges, and 2 have had both new criminal and traffic charges.

**Chart 1. Felony and Misdemeanor Admissions to Franklin County Juvenile Detention Center, 1995–2010**



## About the Data

### Data Sources:

- Franklin County Court of Common Pleas, Division of Domestic Relations and Juvenile Branch (JDC admissions, RECLAIM, Teen Court)
- Ohio Revised Code Section 2901.02, Classification of Offenses (definitions)

### Definitions:

- **Franklin County Juvenile Detention Center:** The maximum-security facility housing juveniles requiring placement in a restrictive or protective environment
- **Felony crime:** Felony crime includes murder, rape, aggravated burglary, aggravated robbery, drug trafficking, auto theft, and breaking and entering
- **Misdemeanor crime:** A misdemeanor is an offense not classified as a felony and for which no more than one year of imprisonment may be imposed as a penalty

### Explanations and Caveats:

- Ohio law requires persons age 16 and 17 to be transferred to adult court if they are arrested for murder, aggravated burglary, or aggravated robbery when a firearm is used.
- RECLAIM operates several programs within itself. Some of the youth served were enrolled in more than one program and may be counted more than once in the total.

### Update Status:

December 2011