

Unemployment

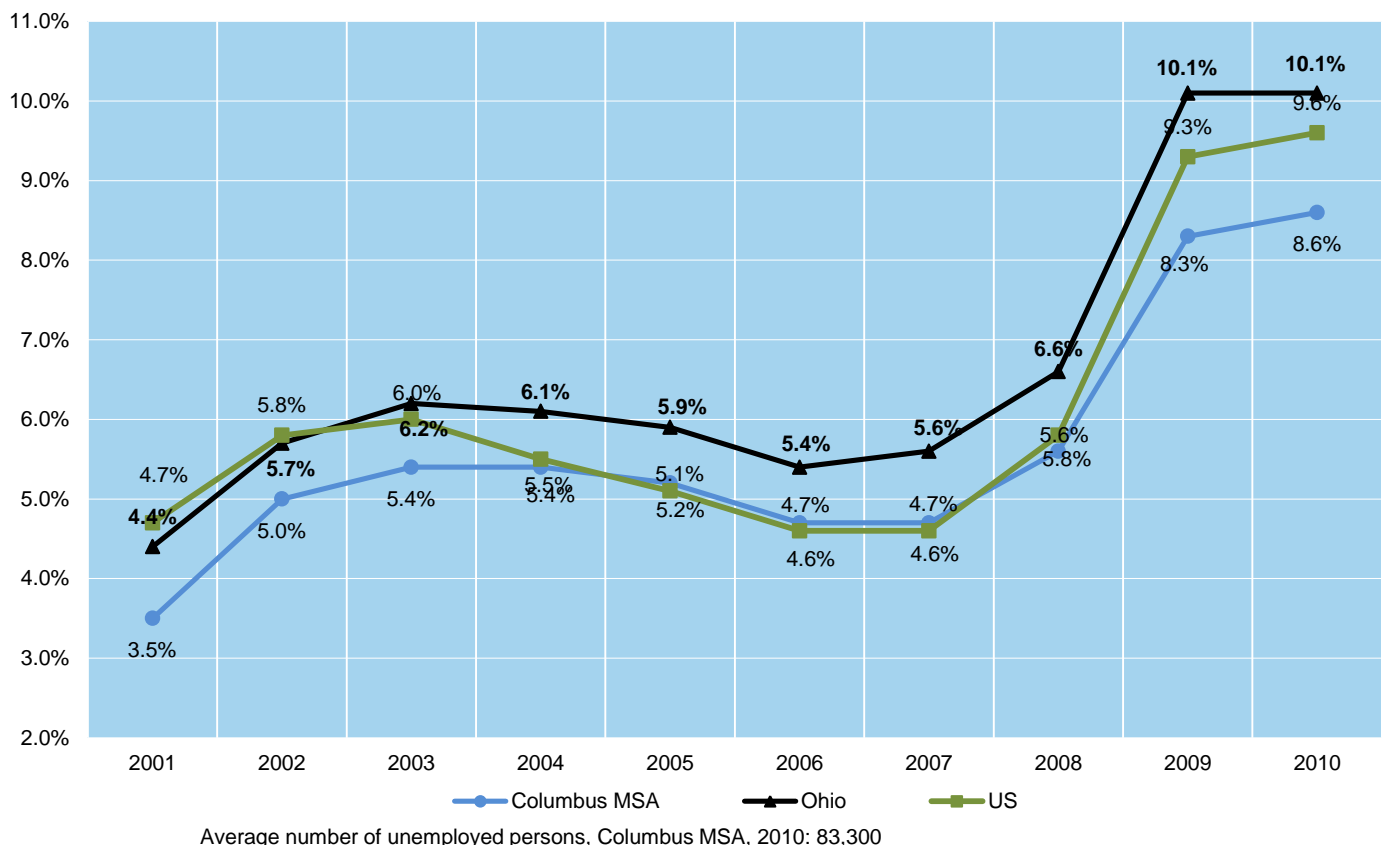
Table 1. Estimated Average Annual Unemployment Rate by Race and Gender, Columbus MSA, 2001–2010

	2001	2002	2003	2004	2005	2006	2007	2008	2009	2010
All Males	3.1%	4.1%	4.6%	6.7%	7.2%	7.3%	5.7%	4.6%	8.9%	12.0%
All Females	5.1%	6.4%	7.2%	7.3%	6.7%	6.9%	6.1%	3.6%	8.2%	8.2%
All Whites	4.0%	5.2%	5.7%	5.4%	5.5%	5.6%	5.1%	4.4%	7.6%	8.8%
All Blacks	9.0%	12.2%	13.2%	14.0%	13.5%	14.1%	12.0%	13.0%	14.5%	19.4%
All Hispanics	6.2%	7.0%	6.9%	7.4%	NA	5.8%	NA	NA	11.6%	9.5%
All Asians	6.9%	9.7%	7.3%	3.5%	4.6%	5.6%	3.7%	2.8%	6.8%	3.5%

MSA = Metropolitan Statistical Area

- Between 2001 and 2010, unemployment rates varied based on race, ethnicity, and gender. The most persistent pattern was the higher level of unemployment among African Americans compared to other racial and ethnic groups. In 2010, the unemployment rate for blacks in the Columbus MSA was 19.4%, whereas whites and Asians had unemployment rates of 8.8% and 3.5%, respectively.

Chart 1. Average Annual Unemployment Rates, Columbus, Ohio, and United States, 2001–2010



About the Data

Data Sources:

- U.S. Department of Labor, Bureau of Labor Statistics
- U.S. Census Bureau, American Community Survey, 2001–2010

Definitions:

- **Unemployed persons:** Persons 16 and over who have no employment; are available for work, except for temporary illness; and have made specific efforts to find employment sometime during the previous four-week period. Persons waiting to be recalled to a job from which they had been laid off are not classified as unemployed.
- **Unemployment rate:** The number of unemployed persons as a percentage of the labor force.

Explanations and Caveats:

- Official unemployment data reflect only those persons who are in the labor force and actively looking for work. The universe of persons who are not employed also includes those who are unable to work because of a disability and those “discouraged workers” who have stopped looking for work.
- Unemployment data presented in this section are not seasonally adjusted.
- The term Hispanic is used to describe ethnicity and can include members of any race.

Update Status:

March 2012